



Start Small. Think Big.



Impact Monadnock (IM) Insider!

Hinsdale Police Department Receives Grant Award and Additional Funding for ACERT Team

We are pleased to share that, with the support of IM, the town of Hinsdale has achieved a significant victory for its children by receiving a \$40,000 grant from **Amoskeag Health** to establish a new Adverse Childhood Experiences Response Team (**ACERT**) team.

The Hinsdale ACERT Planning Team began meeting monthly in March of 2021. Participants include the Hinsdale Police Department, Hinsdale School District, the elementary and middle/high schools, and community partners. Police Chief Charles Rataj, who experienced ACERT in another NH community, championed the program based on:

- The number of the police calls in Hinsdale to homes with young children involving issues such as domestic violence, drug abuse, etc.
- The challenges of accessing services in a rural area with limited public transportation to service providers in Keene, NH (where most services are located)

Additional Funding from MUW's Investors Group

After learning about Hinsdale's efforts and need for additional funding for this program, MUW Investors Group donated an additional \$4500.00 in support of Hinsdale's efforts to hire a Police Social Worker to oversee the program and conduct training for first responders and other partners.

More information about ACERT can be found [here](#).



Mandy Grenier, Program Manager, Impact Monadnock presenting Chief Rataj, Hinsdale Police Department with the award from the MUW Investors Group.

Early Childhood Region 1

Early Childhood Region 1 (ECR1), spanning the Southwestern portion of the state, received funding from the Preschool Development Grant in September of 2021 with the goal of supporting the development of regional solutions to early childhood challenges while building communication and cooperation across the geographic area. The grant funded projects went through June 2023 and are now wrapping up their reporting.

Through the funding they were able to implement a variety of projects including:

- **Collaboration through Mentoring and Coaching**

This project impacted 106 people building confidence and understanding of a variety of practices such as (nature-based learning, home visiting, library programming etc.) through training and intentional follow up and practice growth.

- **Family Support Mini Grants**

Mini grant projects ranged from an earth day celebration, focus groups, story walks, parenting classes, etc. impacting 978 children and families. One parent said “It was a great way to connect to the community around me. It is so hard to meet new people. It will help to build a support system for me as a parent.”

- **Professional Development Trainings**

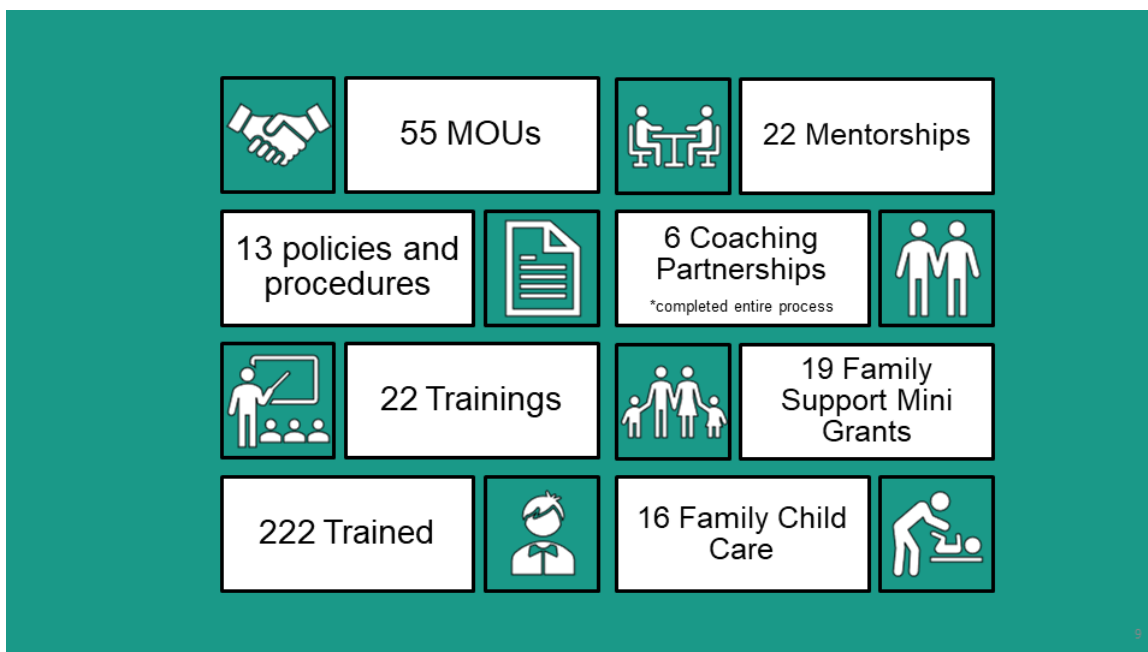
The grant funding was able to support over 222 people with topics included toilet training, sleep, Pyramid Model etc.

- **Family Child Care Infant Toddler Expansion**

Funding from the grant was able to support the number of infant slots by 25 and toddler slots by 44. Child care providers were able to purchase equipment and supplies such as fencing, highchairs, cribs etc. to provide a safe place for infant and toddlers to spend their day.

ECR1's commitment to continually listen to families and to those working in the early childhood system, allowed them to ensure that, as a region, they were working in a coordinated way across schools, family supports, childcare, and other community partners, allowing families to thrive. The work they completed as a region, supported many families and child care workers spanning from the Monadnock Region through the Upper Valley and its

efforts have impacted those involved for generations to come.



Child Care Expansion Project



FREE
Nature-Based Teaching & Learning
Early Child Education (B-5)

Join our Professional Learning Community (PLC) for the '23-'24 school year.

The unique PLC will provide in-person, experiential, and immersive learning opportunities for early childhood educators to grow together, sharing experiences and knowledge.

Our goal: to create opportunities for the children in our care to learn with and in nature throughout the school year. We will spend a large part of each session outdoors exploring, moving our bodies, and learning by doing!

In-person - Monadnock Region
Second Wednesday of the Month (September - June)
6:00 - 7:30 pm
Light snacks and beverages will be provided.

JOIN!
REGISTER NOW

Each registrant will receive an outdoor teaching book set (\$70 value), 135 professional development hours (\$500 value), and ample resources to support nature-based teaching.

Keene State
United Way
Funded through the US Department of Education Congressionally Funded Community Impact Program in partnership with Keene State College and Monadnock Area Inc.

Nature-Based Teaching and Training Opportunity

The Child Care Expansion Project has been supporting new and existing child care providers with professional development opportunities including Child Development Associate Credential (CDA), Pyramid Model Training, reimbursements for child care directors for expenses related to workforce professional development, and coaching. Funded by the grant is a new opportunity, Nature-Based Teaching and Learning for Early Childhood Educators (Birth - 5 years old.)

For more information about the opportunities provided by the Child Care Expansion project visit our website at <https://www.muw.org/cce>

[Download the flyer here.](#)

[Register for the program here.](#)

Resources for Families

As a parent it can be hard to know exactly what to look for at each stage of your child's development. Below are two resources to support families in raising their children:

[Zero to Three](#) - Their mission is to ensure that all babies and toddlers have a strong start in life and underscore that the first three years of life are the most important for lifelong mental health and well-being.



Their webpage is full of resources to help families navigate their child's development.

[New Hampshire Connections](#) - NH Connections is the consumer education website for the NH Department of Health and Human Services (DHHS) and it is filled with resources to strengthen families and offer support statewide.

The organizations listed below provide assistance to families in our region including food, heating/fuel, and referrals to additional resources.

- **[Energy Assistance](#)** - Southwestern Community Services
- **[Hot Meals and Pantry Programs](#)** - Community Kitchen
- **Referral Source for New Hampshire residents - [2-1-1 NH](#) & [Servicelink](#)**

Monadnock Alliance for Families

The Monadnock Alliance for Families (MAF) is a collaborative backed by Impact Monadnock. The Alliance is composed of five organizations (listed below) with the vision that all families in the Monadnock Region have access to high-quality services that strengthen parenting and promote optimal child development.

Support for Local Families

- Home visits for pregnant women and families
- Help accessing services, including health insurance, housing, and fuel assistance
- Play groups, classes, and more
- Services for children under 3 with developmental delays
- Offered at no or minimal cost



The Grapevine Family & Community Resource Center

603-588-2620

Home visits, family support, playgroups, classes, and teen center in Antrim serving: Antrim, Frankestown, Hancock, Bennington, Hillsborough, and Deering

The River Center

603-924-6800

Home visits, family support, playgroups, and classes in Peterborough and serving nearby towns.

Rise for baby and family

603-357-1395

Services for children with possible or confirmed developmental delays around the Monadnock region.

Healthy Starts

603-352-2253

Support for Medicaid-eligible children and families, including nursing visits for children with chronic illness, around the Monadnock Region.

Monadnock Family Services

603-357-4400

Educational and enrichment programs for parents and children, on a variety of topics, around the Monadnock Region.

StartSmart Birth Gifts

Looking to recognize a parent-to-be at your workplace or in your life? Give the gift that gets a child off to a smart start!



If you or your company are going to give a gift, you might as well make it a fun, brain-developing gift.

Show that you care with a StartSmart Birth Gift.

[Order Today!](#)

The most important thing anyone can do for children (and communities can do for the future!) is invest in brain development at an early age. This gift shows that you care about the parent, the child and your community.

StartSmart Birth Gifts include a set of 4 board books for the new baby, Social Emotional Tools for Life: Five Parenting Strategies to Support Emotional Development by Kay Albrecht and Michelle M. Forrester for the parent/caregiver, and a set of fun tips for early childhood brain development from Vroom, all wrapped in a flannel baby blanket! A congratulations card with your customized message can be included.

BONUS: Thanks to our generous sponsors, your purchase also contributes to the enrollment of a local, at-risk child in **Dolly Parton's Imagination Library**. This means more books for local kids!

[Order Here!](#)

Share our newsletter with a friend!

FOLLOW US



[Unsubscribe rd@muw.org](#)

[Update Profile](#) | [Constant Contact Data Notice](#)

Sent by byim@muw.org powered by



Try email marketing for free today!