



Start Small. Think Big.



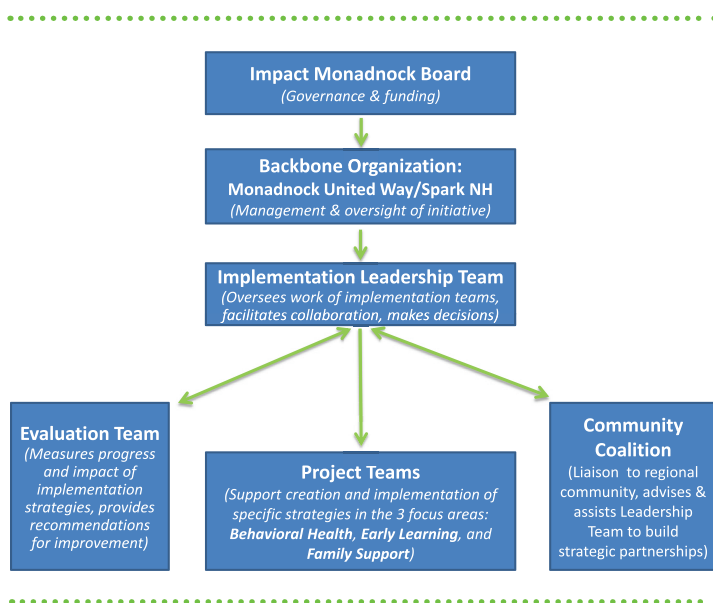
Early Childhood Development Initiative

First Year Report  
February 2015-December 2015

# Vision: All children in the Monadnock Region and their families are healthy, learning, and thriving, now and in the future.

## Introduction

Impact Monadnock, a diverse group of business and community leaders, is working to achieve measurable, meaningful and sustainable improvement in the Monadnock Region by focusing on the key determinant of communitywide well-being: **Early Childhood Development for children age birth to five and their families**. To support this work, Impact Monadnock has mobilized philanthropic organizations and individuals including the New Hampshire Charitable Foundation, the Endowment for Health, Markem-Imaje, C&S Wholesale Grocers, the Putnam Foundation, the Hoffman Family Foundation and the Kingsbury Fund. Thanks to their generosity, Impact Monadnock began and ended its first year on a sound financial footing.



In February 2015, Impact Monadnock launched its **Early Childhood Development Initiative** to address the region’s most compelling social challenges: child welfare, educational attainment and economic opportunity. It selected a backbone organization—Monadnock United Way in partnership with Spark NH—to implement the Initiative along with a Project Director to build the community infrastructure. Governance was provided by the 11-member Impact Monadnock Board featuring people involved with the formative stages of the Initiative and with a mix of executive skills, early childhood expertise and

social service management. A Development Committee comprised of IM Board members was formed with the goal of completing a year-round development plan.

The following pages highlight some of the accomplishments for 2015 and the priorities for 2016.

## 2015: Build Capacity

The priority for 2015 was to build public will, encourage advocacy efforts, form state-level relationships, and oversee a community-led strategic planning process to develop a data-driven roadmap for Early Childhood Development (ECD) across the Monadnock Region.

### *Build Public Will and Advocacy*

To date, 860 people have attended Impact Monadnock events on ECD or heard presentations about the importance of investing in young children and their families. In addition, more than 130 people have signed the pledge to support New Hampshire's children and families and 200 people completed Commitment Forms describing action steps they can take to support the ECD Initiative.

In October, Impact Monadnock and the Greater Keene Chamber of Commerce held a **Regional Business Summit** to present the business case for investing in

early childhood. Nearly 160 business people and policymakers attended the event.



The effort to build public will has led to the emergence of advocacy efforts across several community sectors including business, law enforcement, schools and parents. Following the Business Summit, for example, business leaders formed Business Ambassadors of Impact Monadnock,

a group dedicated to inspiring Monadnock Region employers to engage in improving the lives of young children and their families. Their mission is to adopt family-friendly workplace policies and encourage other businesses to do the same.

The community engagement work was supported by a communications consultant from Spark NH.

### *Strategic Planning*

Impact Monadnock is using an evidence-based community action model called **Collective Impact** to create sustainable and measurable social change. This model is led by the community so members feel invested and empowered. Thus a 30-member Steering Committee was recruited across all sectors of the community to develop the ECD Initiative's strategic plan. Members include business leaders, philanthropists, educators, policymakers, social services, healthcare professionals and law enforcement officers. Experienced consultants in strategic planning and data and evaluation were hired to oversee the effort.

Three focus areas for goal development emerged from the 7-month planning process: **Early Childhood Supports and Services**; **Mental Health**; and **Parent and Family Supports**. A survey was distributed to 150 community stakeholders for additional input and feedback. The strategic plan will be finalized April 2016 and communicated to the community in May through a new and innovative communications campaign including video, an interactive website, Facebook, Twitter and LinkedIn.

### ***State Level Relationships***

The Initiative's Project Director partnered with Spark NH, the governor's early childhood advisory council, and Early Learning NH to ensure the needs of the Monadnock Region were represented at the state level and that access was provided for regional organizations to best-practice and proven ECD Initiatives.

## **2016: Implementation**

Priorities for 2016 include:

- Finalizing the Strategic Plan and developing pilot strategies for implementation in the Monadnock Region
- Developing a Data and Evaluation Plan to measure the progress of pilot strategies
- Building a community-led leadership structure to oversee implementation of the Strategic Plan
- Expanding the existing base of financial support to new funding sources including seed money for pilot strategies
- Launching a communications plan to build long-term sustainability through advocacy, community engagement and funding
- Mobilizing regional school districts including Keene (SAU 29), Conval (SAU 1) and Jaffrey-Rindge (SAU 47) to invest in early childhood by hosting regional conversations about early childhood development with NH Listens
- Broadening advocacy efforts to include such sectors as faith-based communities and parents
- Solidifying the infrastructure supporting the Initiative by continuing the contractual relationship between Impact Monadnock and its backbone partners, Monadnock United Way, Spark NH and Early Learning NH

## **Board of Directors**

### **Janice H. Barry**

Keene, NH

Title I Project Manager and McKinney-Vento Liaison, SAU 29,  
and Keene Community Education Adult Education Director

### **Dottie Bauer, Ed.D.**

Keene, NH

Professor of Early Childhood Education at Keene State College  
(former preschool and special educator)

### **Patricia Campbell, D.O.**

Keene, NH

Pediatrics and Adolescent Medicine, Cheshire Medical Center

### **Eileen M. Fernandes**

Keene, NH

Population Health Manager, Cheshire Medical Center/Dartmouth Hitchcock Keene

### **Richard C. Hill**

Marlborough, NH

Retired, Director of Manufacturing, MARKEM Corporation

### **Joshua R. Meehan**

Keene, NH

Executive Director, Keene Housing & Chairperson, Keene Housing Kids Collaborative

### **Jeffrey B. Miller**

Marlborough, NH

Retired Executive, MARKEM Corporation

### **Helene Mogridge**

Keene, NH

Chief Executive Officer, Keene Family YMCA

### **Susan B. Newcomer**

Spofford, NH

Workforce Development Coordinator, Greater Keene Chamber of Commerce

### **Joseph P. Parisi**

Spofford, NH

Retired Executive, Markem-Imaje.

### **Barbara Tremblay**

Keene, NH

Retired Educator/Principal, SAU 29

### **Penelope Ryder Vaine, BSW**

Winchester, NH

Program Manager of Maternal and Child Health Program at  
Home Health Care, Hospice and Community Services

# Steering Committee

**Karen Atkins**

Division of Children, Youth & Family Services

**Dottie Bauer, Ed.D.**

Keene State College  
Impact Monadnock Board

**Elizabeth Chipman**

Keene Housing Kids Collaborative

**LeeAnn Clark**

Monadnock Community Hospital

**Cari Coates**

Conval School District

**Detective Bob Collinsworth**

Keene Police Department

**Amber Connary**

Keene Parent

**Liz Coppola**

Keene Family YMCA

**Toni Ellsworth**

Rise for baby and family

**Dr. Kathy Fisher**

Cheshire Medical Center

**Jocelyn Goldblatt**

The Orchard School

**Cathy Gray**

Cedarcrest for Children with Disabilities

**Professor Susan Loman**

Antioch University New England

**Nancy Macalaster**

Sophia's Hearth Family Center

**Lisa Mahar**

Monadnock Waldorf School

**Christine McCullough**

Peterborough Parent

**Susan Meehan**

Retired (SAU 29)

**Kerry Belknap Morris, M.Ed.**

River Valley Community College

**Melinda Mosier**

New Hampshire Charitable Foundation

**Jay Pettapiece**

Vision Financial Corporation  
Hannah Grimes Board

**Suelaine Poling**

Keene Day Care Center

**Rich Randall**

Polyonics

**Sheriff Eli Rivera**

Cheshire County Sheriff's Office

**Kris Roberts**

State Rep/Keene School Board

**Roberta Royce**

Winchester Learning Center

**Dr. Art Simington**

Retired Pediatrician

**Katie Schwerin**

W.S. Badger Company

**Betty Tatro**

Monadnock Regional School Board

**Amy Theriault**

Peterborough Parent

**Chuck Weed**

Cheshire County Commissioner

**Andrea Wright**

C&S Wholesale Grocers

**Gail Zachariah**

Keene Public Library

## **Business Ambassadors**

**W.S. Badger Company**

**Baudelaire, Inc.**

**C&S Wholesale Grocers**

**Communicators Group**

**Engelberth Construction Company**

**Filtrine Manufacturing Company**

**Greater Keene Chamber of Commerce**

**Savings Bank of Walpole**

**Polyonics, Inc.**

**Vision Financial Corporation**



Start Small. Think Big.

