

WHERE CHILDREN THRIVE:

Community-Led Solutions in Early Childhood Region 1

Impact Report 2021-2025





ABOUT US

EARLY CHILDHOOD REGION 1 WAS ESTABLISHED in the fall of 2021 to improve educational, health, and social-emotional outcomes for children prenatal through age 8. The initiative has brought together representatives from schools, early care and education providers, family support agencies, mental health, public health, families and community partners to build a sustainable and coordinated system in support of children and families.

Early Childhood Region 1 is part of a statewide system funded through New Hampshire's Preschool Development Grant.

WHY IS THIS WORK IMPORTANT?

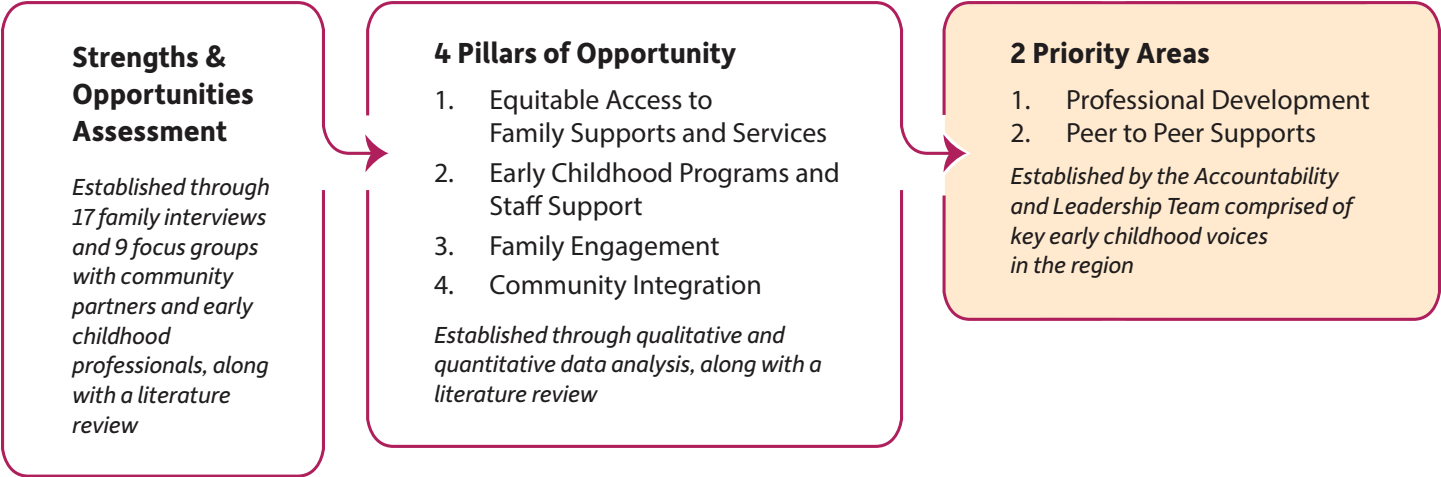
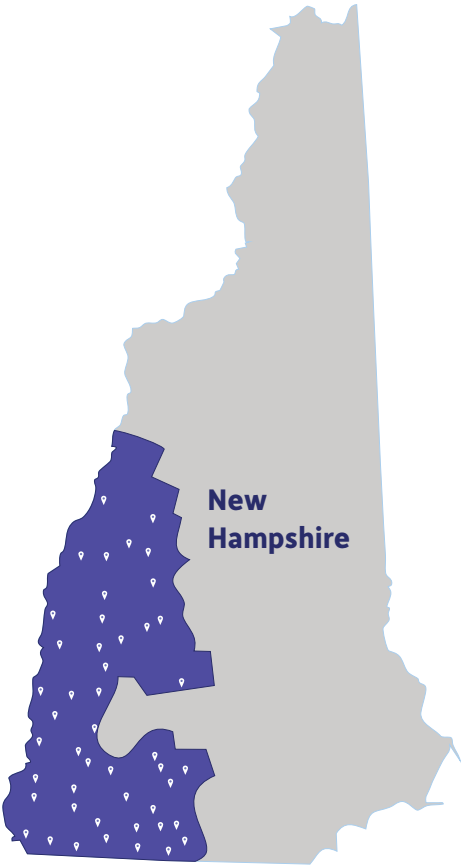
New Hampshire's parents want their children to thrive, and we all know that parenting comes with challenges. Many parents are not aware of health care coordination services, home visiting programs, parent education opportunities, and other family support programs – or have difficulty accessing them in their communities. Families living in the rural areas that characterize much of Region 1 have low to moderate access to childcare for their young children. A few towns have no childcare facilities at all.

In Region 1, our goals include helping childcare programs grow, retaining experienced staff, providing high-quality care, and expanding access to valuable support programs for families within local communities

PLANNING BASED ON STRENGTHS AND OPPORTUNITIES TO IMPROVE

A community-centered process

OUR GEOGRAPHIC AREA



EARLY CHILDHOOD REGION 1

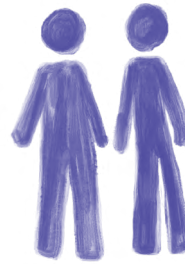
IMPACT BY THE NUMBERS

Professional Development and Peer to Peer Supports



222

Professionals
trained



28

Mentor and
coaching
partnerships
completed



22

Trainings held

Family Support



978

Caregivers and
children impacted



16

Family childcare
facilities
awarded grants



18

Family support
mini grants
awarded

Collaborative Partnerships



92

Organizations
engaged

OUR PROJECTS

FROM LEARNING TO LEADING

Nurturing Expertise in Early Childhood

Childcare professionals participated in trainings and mentorships on varied topics, often passing their knowledge along to newer professionals. Topics included:

- + Trauma informed practices
- + Toilet training
- + Nature play
- + Feeding children
- + Infant-Toddler best practices
- + Nutrition
- + Pyramid Model (supporting social and emotional learning)
- + Healthy Outcome from Positive Experiences Framework (promoting positive childhood experiences in communities and systems)
- + Home visiting best practices
- + Nature-based education
- + Professional credentialing
- + Practice-based coaching
- + Strengthening Families Framework

Participants reported positive changes in teaching practices, stronger onboarding for new staff, and enhanced collaboration. Personalized, one-on-one support proved highly effective for professional growth and relationship-building. Coaches reported greater confidence in sharing their knowledge and skills with others.

BUILDING BELONGING

Family Connection Through Local Experiences

978 parents and children participated in early childhood enrichment experiences like Earth Day celebrations, parenting education, story walks, scavenger hunts, community garden projects, and Make-and-Take resource events. In total, we distributed over \$25,000 through 18 grants to community partners for these projects, and grants were allocated with the help of a parent review committee. A small investment can make a big impact.



“It was a great way to connect to the community around me. It is so hard to meet new people. It will help to build a support system for me as a parent.”

“This work is a great example of how 1:1 coaching, observation, encouragement from a mentor/coach, goals and accountability can help educators grow in new directions!”

127
childcare professionals participated in **22** trainings

21
early childhood professionals mentored **88** colleagues

18
early career professionals received coaching from peers

+++++

978
parents and children participated in enrichment experiences through **18** grants

“Thank you for this opportunity for my family and for bringing nature closer to more families in the Monadnock region.”

SMALL SPACES, BIG IMPACT

Building Up Family Childcare

We provided 16 Family Childcare Providers with \$3,500–\$8,500 grants to improve their childcare facilities. The most common items purchased were fencing materials, equipment for playrooms, and technology. This allowed 69 childcare slots to be added.

LIBRARIES AT THE HEART

Enriching Spaces for Young Children

We partnered with 20 libraries to create inclusive, welcoming spaces for young children and families—offering hands-on training, one-on-one consultation, and peer connection opportunities.

4 rural libraries boosted their capacity to serve all children through inclusive programming, librarian training, self-assessments, and targeted support funded by the Center for Advancing Rural Health Equity.

All libraries improved in strategy knowledge and application.



“This grant started with what librarians and communities wanted and stayed true to that.”

CONNECTING CHILD CARE LEADERS

Strengthening Local Provider Networks

Our work strengthened 4 Childcare Directors' Networks—two for center-based and two for family-based providers—through funding, facilitation, and strategic support.

We helped Networks expand professional development opportunities with guest speakers and conference scholarships, while deepening connections to statewide initiatives and resources to enhance communication and collaboration across the region.

WHAT'S NEXT?

Early Childhood Region 1 remains committed to sustaining the strong relationships, learning communities, and collaborative momentum built over the past four years. We will continue convening regularly to discuss emerging needs, share resources, and align efforts across sectors. Together, we aim to stay connected as a regional network, support one another's work, and explore opportunities to fund and implement future projects. By maintaining open communication and collective vision, Region 1 will keep advancing equitable, high-quality support systems for young children and their families.

KEEP IN TOUCH!

Ellen Taetzsch ellen@muw.org

<https://www.muw.org/ECR1>

“The look on my families' faces when they saw our new and updated spaces was indescribable, and I was filled with extra pride at our little village and our growth in one year's time!”

69

childcare slots added

16

family childcare providers implemented physical upgrades with grants

+++++

20

libraries received training, consultation, and networking

4

libraries received individualized support

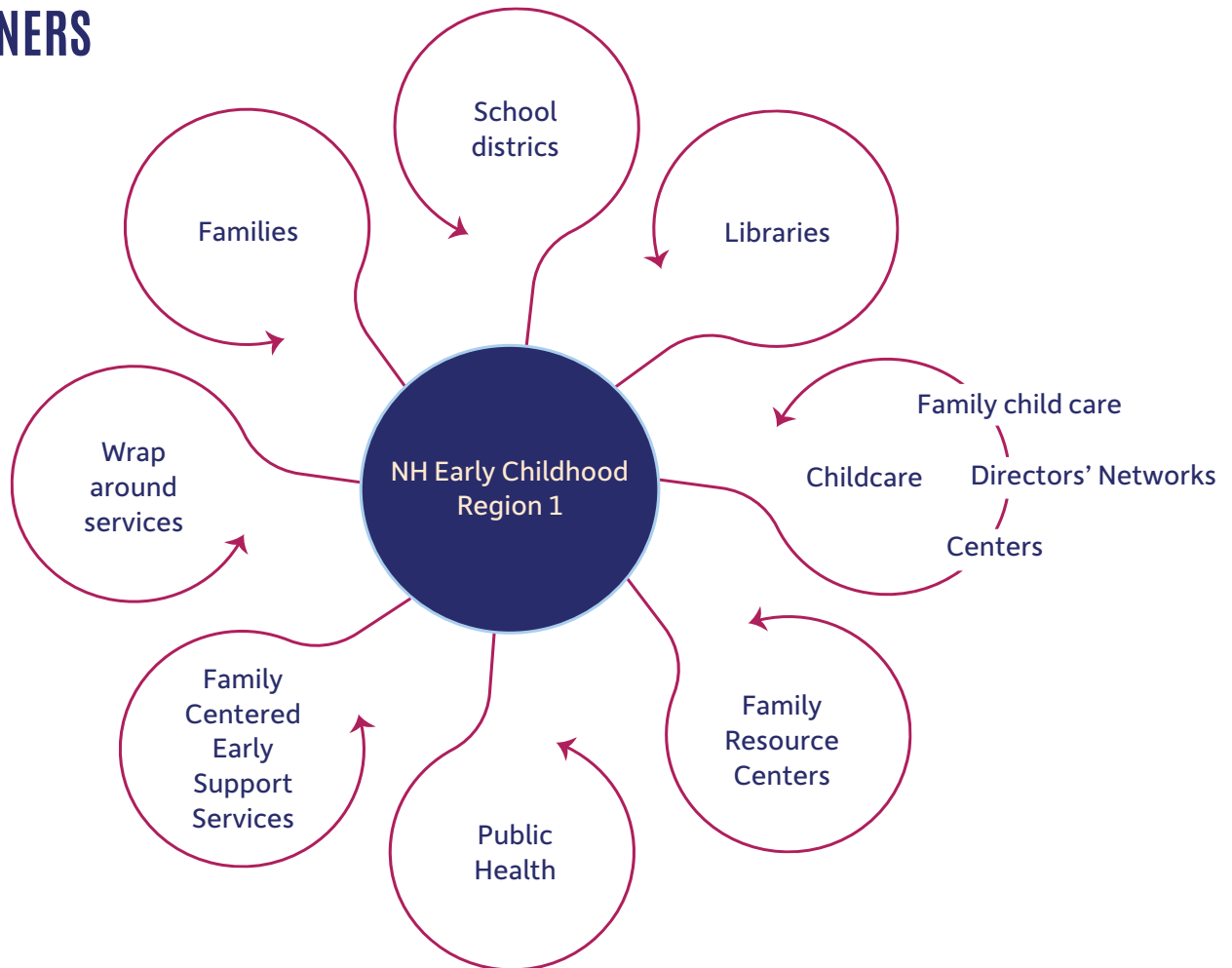
+++++

4

childcare directors' networks received funding, facilitation, and strategic planning support



Thank you to OUR PARTNERS



MOVING FORWARD TOGETHER

