

**Monadnock United Way**

**ANNUAL REPORT  
2021**



Top l to r: Katie Gardella, Vicki Doyle,  
Kate Cote, Shirley English, Ellen Taetzsch  
Bottom l to r: Ed Guyot, Liz LaRose

Dear Friends of MUW,

There is much to celebrate in this report. We exceeded our fundraising goal. More COVID Recovery funds were raised and distributed. Current initiatives are making gains and new projects are on the horizon.

MUW is typically thought of as a major fundraiser, supporting children, education, and financial stability in every community throughout the region. But with your support, we've done so much more:

- **Attracted new funding** and resources to the region to launch new, evidence-based initiatives.
- **Brought sectors together** to collaborate in meaningful projects for our community.
- **Strengthened our nonprofit network** to achieve more together with limited resources.

Here are a few successes in 2021:

Impact Monadnock is leading the newly-formed **Early Childhood Region 1 Coalition** thanks to Federal funds. Families from the Monadnock Region through Sullivan County and the Upper Valley will thrive from coordinated services based on their input and needs.

In late 2021, Keene State College was awarded \$1 million in Congressionally Directed Spending through Senator Jeanne Shaheen's office for a joint project with the College, MUW, the Keene Family YMCA, and regional childcare centers. Our **Early Childhood Expansion Task Force** aims to address the child care shortage by attracting and training childcare professionals.

MUW and the NH Community Loan Fund launched the **Monadnock Resource Alliance**. This cross-sector team is collaborating to ensure that our region has resources to ensure stable housing for all.

With technical assistance from MUW staff, collectives funded by MUW pivoted, flexed and, in many cases, expanded services. The results are good for our community:

- 2,600 families received home visiting, education programs and child development activities through the **Monadnock Alliance for Families**, up from 989 in 2020.
- 75% of visitors to local food pantries in 22 towns received fresh produce and recipes through the **Monadnock Food Pantries Collective** – up from 63% in 2020.
- The **Monadnock Region After School Collective** provided safe, educational settings for 938 children and had an 80% reduction in behavior incidents.

This quote says it all:

**“Having pantry leaders commit to being in a collective has changed the outlook of all concerned and has given us a sense of belonging.”**

– Phoebe Bray, Lead Agency for The Monadnock Food Pantries Collective

Sincerely,

Liz LaRose, MUW President

Edward R. Guyot, CPA, Board Chair



# OUR MISSION

Monadnock United Way is dedicated to improving lives by mobilizing diverse partners and investing in programs and people to create long-lasting, measurable change.

## 2021 MUW Board of Directors

### **Edward R. Guyot, CPA, CGMA, MBA, Chair**

John G. Burk and Associates

### **Katie Sutherland, Vice Chair**

Principal - KCS Architects

### **Alex Kapiloff, Treasurer**

Vice President – Kapiloff Insurance Agency

### **Elizabeth Coppola, Secretary**

Consultant/Broker - The Richards Group

### **Ben Wheeler**

Senior Vice President - Commercial Lending -  
Savings Bank of Walpole

### **Michelle DellaVita**

Manager of Human Resources Programs -  
Main Street America Insurance

### **Ruth Jacobs**

Retired-1911 Office

### **Douglas Woodruff Keene, M.D., M.P.H.**

Medical Director - Maplewood Nursing Home

### **Mike Kowalczyk**

Retired, MARKEM-Imaje

### **Amy Matthews, DNP, MS, RN, CENP**

Chief Nursing Officer and Vice President of  
Patient Care Services - Cheshire Medical Center -  
Dartmouth Hitchcock

### **Erik Murphy**

SymQuest Group

### **Myra Rebillard**

Project Manager - Fragomen, Del Rey, Bernsen  
& Loewy

### **Michael Remy**

Director of Operational Network Strategy -  
C&S Wholesale Grocers

### **Eli Rivera**

Cheshire County Sheriff

### **Kelly Scargill**

Director of Public Relations and Communications -  
SolutionHealth

### **Barbara Tremblay**

Retired School Superintendent

### **Marcus Owens**

Plant Manager - Timken Aerospace Keene Plant

## Monadnock United Way Staff

### **Liz LaRose**

President

### **Katie Gardella**

Director of Resource Development  
and Community Engagement

### **Kate Cote**

Volunteer and Community Engagement Manager

### **Shirley English**

Project Manager for Strategic Initiatives

### **Vicki Doyle**

Database Manager

### **Annie Dintino**

Impact Monadnock Program Manager and  
Preschool Development Grant Project Co-director  
(Grant Funded)

# COVID-19 Recovery Funding

In September 2021, Monadnock United Way awarded \$85,500 in grant funding to qualifying programs and initiatives working to help individuals and families affected by the COVID-19 pandemic in the Monadnock Region.

The investments, designed to help provide gap funding for needs not covered by federal, state, and local aid, funded childcare scholarships, housing related advocacy, early learning staff development, and a digital literacy needs assessment for seniors. These priority areas emerged during MUW's Community Voices series, a forum for nonprofits, businesses large and small, government, and philanthropists to learn about the impact of COVID-19 and engage in an opportunity to reimagine and rebuild a stronger more equitable region for everyone.



Nine organizations received funds ranging from \$2,500 - \$15,000 including:

**Keene Housing Kids Collaborative** - \$2,500 to fund summer activity scholarships for children.

**The Mayhew Program** - \$10,000 to support students participating in one-on-one and small group mentoring.

**The Monadnock Alliance for Families (MAF)** - \$15,000 for general support of families struggling through COVID-19 recovery.

**Monadnock Community Early Learning Center** - \$10,000 for temporary childcare scholarships for families transitioning back to the workforce or school.

**The Monadnock Social Services Collective** - a newly formed collective consisting of Keene Senior Center, Keene Housing, Cheshire Medical Center, MFS, CVTC, HCS, SCS, SWRPC, Service

Link, MAT, RSVP. The Collective received \$15,000 to conduct a needs assessment on digital literacy and access in the Monadnock Region.

**The New Hampshire Community Loan Fund** - \$5,500 to produce a video highlighting the affordability, availability, and quality of life afforded by home ownership in a Resident Owned Community addressing adequate and affordable housing for families in the Monadnock Region.

**New Hampshire Legal Assistance** - \$7,500 for housing-related advocacy.

**Rise for baby and family** - \$10,000 for childcare scholarships and continuation of safety protocols initiated during the height of the pandemic.

**Winchester Learning Center** - \$10,000 for funding to provide support for staff education and training.

“

Thanks to MUW we are able to help parents get back to work without worrying about childcare for the first two weeks!

– Judy Watkins, Monadnock Community Early Learning Center, MCELC Executive Director

We are delighted to receive funding to produce a video that will highlight how manufactured housing can be part of the solution to the affordable housing crisis in the Monadnock Region.

– Michele Talwani, Director of Community Relations for the NH Community Loan Fund

<https://www.youtube.com/watch?v=yMX9lkefN4Q>

”

## DONORS TO THE COVID-19 RECOVERY FUND

100+ Women Who Care -  
Cheshire County  
Barclays  
CMH Foundation  
Endowment for Health  
Hoffman Family Foundation  
Lawrence Dachowski Charitable  
Fund

Mark and Kathy Gross  
Charitable Fund  
NBT Bank  
Netflix  
NGM Foundation - Main Street  
America Group  
PMH Family Charitable Fund

Putnam Foundation  
Quaker Meeting  
Timken Foundation of Canton  
United Church of Christ  
Vieira Family Fund  
You Have Our Trust Fund



## MONADNOCK RESOURCE ALLIANCE

### Collaborating on Housing Stability

MUW and the NH Community Loan Fund launched a cross-sector coalition to help solve key problems affecting our region. One such issue is housing in all its forms: availability, affordability, quality, stability, and homelessness to name a few. Alliance members collaborate to ensure that our region's nonprofits, businesses, towns, community groups, and other stakeholders understand the complexity of our housing challenges and have access to community building resources needed to ensure that everyone has stable housing.

#### Members include:

Center for Population Health at Cheshire  
Medical Center  
Cheshire County  
Cohen Center for Holocaust and Genocide Studies  
at Keene State College  
Greater Keene and Peterborough Chamber  
of Commerce  
Hannah Grimes Center for Entrepreneurship

Individual Community Leaders  
Mascoma Savings Bank  
Monadnock Interfaith Project  
Monadnock United Way  
NH Community Loan Fund  
Savings Bank of Walpole  
Southwest Regional Planning Commission  
Southwest Community Services

# AT MONADNOCK UNITED WAY, WE FIGHT FOR CHILDREN, EDUCATION, AND FINANCIAL STABILITY IN EVERY COMMUNITY THROUGHOUT THE REGION.



## CHILDREN

Children live in safe, nurturing, and healthy homes and communities

- Young children are safe, healthy, and resilient
- School-age children are safe, healthy, and resilient
- Transition-age children are safe, healthy, and resilient



## EDUCATION

Community members receive an education that enables them to achieve their fullest potential

- Children are ready to learn by the time they enter school
- Students are proficient in fundamental areas of learning, including social-emotional skills
- Community members are prepared to embark on post-secondary pursuits



## FINANCIAL STABILITY

Community members have the financial resources they need to live healthy, happy, and productive lives

- Community members are financially literate and empowered
- Community members achieve financial stability and well-being

## BASIC NEEDS



Community members have access to food, shelter, heat, and transportation



Monadnock United Way

**GIVE. ADVOCATE. VOLUNTEER.**



# 2021 PARTNERS, PROGRAMS, & INITIATIVES

## Cheshire County Emergency Housing Collaborative:

Southwestern Community Services, Hundred Nights, and Monadnock Center for Violence Prevention.

## Monadnock Food Pantries Collective:

The Community Kitchen (Keene), Gert's Pantry (Swanzy), Joan's Pantry (Chesterfield), the Federated Church Food Pantry (Marlborough), Helping Hands of Troy, Jaffrey Food Pantry, and Kidz Cupboard (Marlborough).

## Monadnock Region Afterschool Collective:

ACCESS Winchester Afterschool Program; Hinsdale Afterschool Program; Keene Family YMCA School's Out Program (plus Chesterfield site); Project Keep (sites at Symonds, Fuller and Franklin Schools in Keene); Project Edventure Marlborough Afterschool; ACES 93, Afterschool Program (sites at Mt. Caesar and Cutler Schools in Swanzy, Troy Elementary, and Emerson Elementary in Fitzwilliam); Hillsboro-Deering Before and Afterschool.

## Monadnock Alliance for Families:

Home Healthcare Hospice & Community Services (HCS) Healthy Starts, The Grapevine Family and Community Resource Center, Rise for baby and family and The River Center, and Monadnock Family Services.

Keene Day Care Center, Inc.

Monadnock Community Early Learning Center  
Southern NH Services – SNHS Hillsboro Child Development Center

Southwestern Community Services, Inc. – Headstart Dental Program

Walpole Village School

Winchester Learning Center

## Other 2021 Investments include:

Impact Monadnock

Pyramid Model, Preschool Development Grant, Impact Monadnock Business Ambassadors (IMBA), and StartSmart

Early Learning NH

MUW Investor's Affinity Group

2-1-1, United Way's social services hotline

Direct Designations from donors to various agencies

Community Building

[Click here for the full list of programs, agencies, and funding.](#)


## FUNDED PARTNER SUCCESS

The COVID-19 pandemic created a world of uncertainty for all of us. We are so proud of how our community responded. Throughout this report, we have highlighted some of the enormous accomplishments of our funded partner agencies in 2021.

### Monadnock Region Afterschool Collective

- 938 children received afterschool care
- 637 parents reported improved financial stability due to the availability of afterschool care
- 88% of attendees report feeling safe, supported and a sense of belonging in the program






2021 was a busy year for the seven pantries of the Monadnock Food Pantries Collective: **The Community Kitchen, Gert's Pantry, Joan's Pantry, Federated Church of Marlborough, Helping Hands of Troy, Jaffrey Food Pantry, and the Kidz Cupboard.** With COVID-19 still surging, each had to modify how they did business to ensure that food was delivered to individuals, children, and families safely and efficiently.

The pantries in the collective were forced to severely limit the number of people allowed into their buildings or move to a drive-through model; food drives were limited resulting in a loss of donated food; and all the pantries experienced a reduction in volunteers. Even through all these hardships, **the pantries served fresh produce and nutritious meals to 2,033 people around the region.** Flexible funding from MUW helped the pantries keep their clientele safe. It allowed them to purchase masks and sanitizing equipment, in addition to food.

## STRONGER TOGETHER IN 2021

# Monadnock Food Pantries Collective




Here are some of the creative ways the pantries used the flexible funding from MUW:

- Gert's Pantry of Swanzey used MUW funds to maintain a van they purchased for deliveries to individuals in senior housing.
- Joan's Pantry in Chesterfield used the funding to purchase, among other things, paper and hygiene products. These items were purchased in response to clients asking for them as they could not be bought with food stamps.
- The Marlborough Food Pantry used the funding to purchase three air purifiers for their pantry.
- The Jaffrey Food Pantry used the funding to purchase CSA shares so that more fresh fruits and vegetables could be available to their clientele.

All the pantries experienced the benefits of working together. One useful aspect of working together is the ability to gather and share information. Another aspect that has proven beneficial is the ability to share donated items. Pantries contact other collective members when they have donated items that they know they may not be able to use or store. This way, items are shared and used where they are needed most.






The Monadnock Alliance for Families' (MAF) vision is that all families in the Monadnock Region have access to high-quality services that strengthen parenting and promote optimal child development. The Alliance includes **Rise for baby and family, Monadnock Family Services (MFS), The River Center, The Grapevine Family & Community Resource Center, and Healthy Starts (HCS)** and provides home visits, assistance accessing services, playgroups, classes, and more.

In 2021, MAF **served 626 families through home visiting services, 1181 families through parent education events, and 846 children through engagement activities** while continuing to navigate the uncertainty of the ongoing COVID-19 pandemic.

The staff was flexible and creative in supporting families.

## STRONGER TOGETHER IN 2021

# Monadnock Alliance for Families




The River Center created a walking group that meets on the rail trail in Jaffrey. Rise for baby and family staff has pop-up tents to work with babies outside.

All five agencies also provided direct support for families in emergency situations.

- A family turned to The Grapevine's wood bank for access to free firewood for heating.
- A family was encouraged by their River Center home visitor to apply for home heating oil help through Southern NH Fuel Assistance.
- A family was guided through the process of applying for subsidized housing by their Healthy Starts social worker.
- A family receiving services through Rise for baby and family also received a donation of holiday gifts for all the children in their family.
- A family receiving services through MFS had an overdue electric bill paid on their behalf.

Staff participate in ongoing professional development to help them increase knowledge and skills in many areas including **Strengthening Families Protective Factors** and **Family Centered Early Support & Services (FCESS), Parent Coaching Training.**




This program implements a comprehensive dental care plan for children ages three to age five at four Head Start centers in Cheshire County. The dental program provides oral health education and promotion for children enrolled in Head Start by conducting dental screenings, facilitating treatments, providing parents/guardians with screening results, and by collaborating with dental hygienists for timely follow-up treatments and appointments.

This program was originally part of WIC (Special Supplemental Program for Women, Infants, and Children) and required clients to go into the office for dental screenings. COVID-19 continued to create disruptions in services throughout 2021, including prohibiting those in-person services from being delivered. WIC put the program on hold in order to comply with those safety protocols.

**STRONGER TOGETHER IN 2021**

## **Southwestern Community Services (SCS) Head Start Dental Program**



In the summer of 2021, SCS' Head Start responded to this issue by enthusiastically taking over management of the Dental Program citing that the oral health of children had suffered during the pandemic and this program was an opportunity to effectively address any existing or new dental issues. **Head Start was able to deliver the dental services as it provided a hybrid model of remote and in-person learning during the 2020-21 school year, taking proactive approaches to operate effectively.**

During the school year, Head Start was able to develop and implement a protocol ensuring that children have access to oral hygiene practices and that safety measures were put into place to prevent transmission of the virus while conducting these appointments. The Head Start Dental Program promotes oral health hygiene by ensuring that all children brush their teeth after onsite meals and by facilitating oral health preventative care, treatment, and follow-up. In the fall of 2021, the Head Start Dental Program:

- Screened 64 children at 4 sites in the Monadnock Region
- Provided treatment including fluoride, cleaning, and sealants to 13 of those children
- Continued to explore ways to implement dental screenings and follow-up care





## Impact Monadnock Leads New Coalition

Since launching in 2015, MUW's Impact Monadnock (IM) has become a recognized leader in early childhood initiatives and coalition-building across the State. Our model has been so successful that we were named Lead Agency for NH Early Childhood Region 1 in late 2021.

As Lead Agency, we are forming a community-wide coalition of childcare and education centers, schools, health and mental health organizations, family resource centers, and businesses spanning a 100-mile corridor of the Monadnock, Sullivan County and Upper Valley regions of NH.

The coalition in this newly-expanded region focuses on improving educational, health, and social-emotional outcomes for children prenatal through age 8 and their families. As a result of the coalition's work:

- Children's social-emotional, educational and health outcomes will improve.
- Families will have a genuine voice and role in the services that benefit their children.
- Families of young children will more easily access unduplicated services when they need them.

The grant, totaling \$725,000, provides funding over a multi-year period to develop and maintain the coalition and to foster collaboration among agencies, schools, and programs.

IM is honored to share the Collective Impact skills and expertise we've honed (as well as lessons learned) with our neighbors to the north. We know that deep collaboration strengthens services and benefits entire communities.

**We look forward to the new connections made and successes to come!**

*The Department of Health and Human Services, Administration for Children and Families awarded the funds through The Preschool Development Grant (Award# 90TP0060-01-00).*



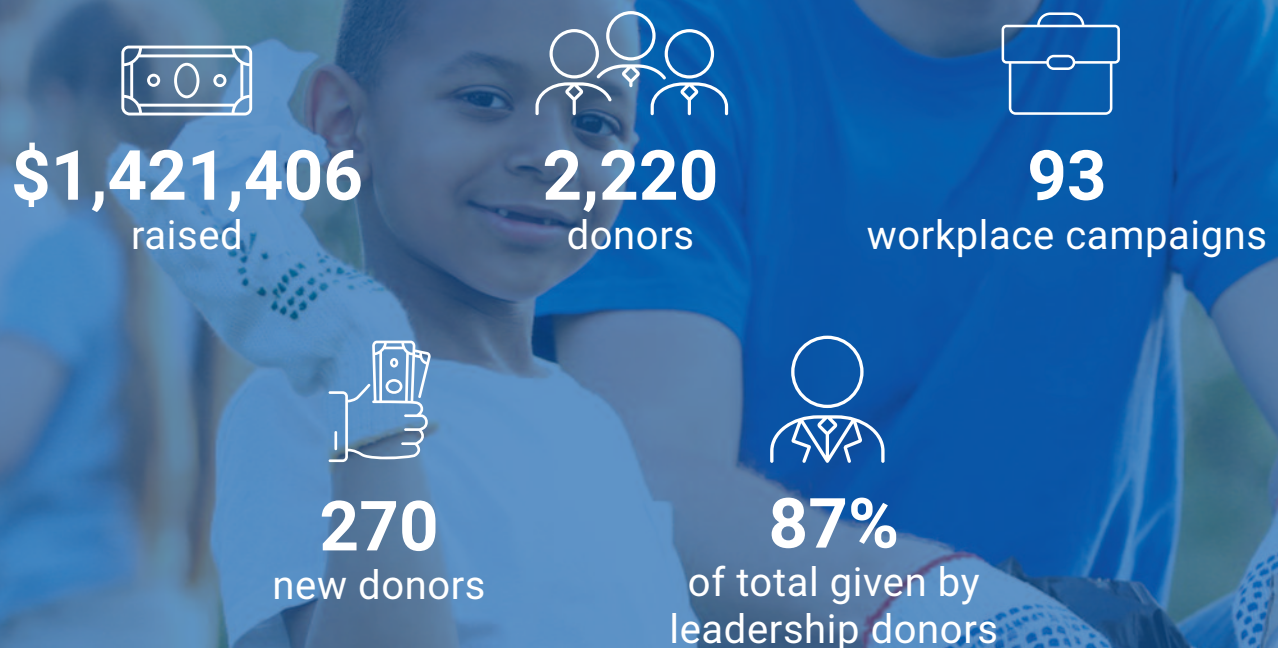


# Stronger Together

Stronger Together was the theme of the 2021 campaign and this community truly did embody that phrase.

Gifts to MUW stay local and provide critical funding to programs that strive to ensure that children are healthy and safe, that community members have the financial resources they need to live productive lives, and making certain that everyone receives an education that enables them to achieve their fullest potential.

## Campaign at a Glance



## THANK YOU TO OUR CAMPAIGN CHAIRS!

The success of MUW's annual fundraising campaign depends on the support of a large network of volunteers. Leading the way are our General Campaign Co-chairs. We are so grateful to this year's Co-chairs below (L to R) **Danya Landis**, co-owner of Machina Kitchen and Artbar, **Karen Peterson**, Development & Fundraising Coordinator Monadnock Developmental Services, and **Beth Wood**, co-owner 21 Bar and Grill.



## MUW Super Supporter

### Kelly LaFalam is an MUW supporter extraordinaire!

As soon as she secured her first job out of college, Kelly began contributing \$1 per week through her employer's annual campaign. She requested her donation be designated to the Keene Senior Center, where her grandmother volunteered. What impressed Kelly the most was receiving a handwritten thank you note from the director of the Center for what she considered to be a modest donation. She realized how appreciative the organization was for each dollar they received. That was in the late 80's. Since then, Kelly has enthusiastically contributed to MUW in a wide variety of ways.



### Getting to Know the Community (Better)

Several years later, still at the same employer, Kelly was offered the opportunity to serve in the role of Loaned Employee (LE) for MUW's annual campaign. She was a bit hesitant, fearing that it might be time consuming. But she was curious about the role and the ability to learn more about her community, and agreed to take it on.

**"What a gratifying experience! Not only did I have the best group of fellow LEs to work and bond with, but I got to know much more about local companies and MUW."**

Kelly found the training given to the LEs before they engaged with the community to be thorough and extremely useful.

### Serving in a Variety of Roles

After such a positive experience serving as an LE, Kelly soon joined the Allocations Committee (now referred to as the Investment Committee). In that role, Kelly engaged with nearly every MUW partner agency. She also gained a deeper awareness of how MUW raised and allocated funds and experienced first-hand the sometimes difficult decisions the committee had to make. Another thing that stuck with Kelly was the wonderful and productive synergy between the employees and volunteers at each agency that she observed. Kelly then served on the MUW Board of Directors for several years. Her experience continued to broaden her understanding and appreciation of all that MUW does for our community.

### Why Get Involved?

Even people who have grown up in the Monadnock Region, like Kelly, can learn a tremendous amount about our community and the challenges many of our neighbors experience in meeting their needs and the needs of their families.

Like many people, Kelly feels she has gotten more out of her volunteer efforts and donations than she has given. She is deeply honored to have worked alongside many intelligent, compassionate, and energetic people while volunteering for MUW. To Kelly, MUW represents all that is good and noble in our community, and she is proud to call herself a donor to MUW—for life!





## LEADERSHIP DONORS

Monadnock United Way is grateful to all its donors and supporters. None of our work would be possible without you. Below is a listing of our 2021 Leadership donors (\$500+) and our Legacy Society members.



### **The Alexis d'Toqueville Society**

***Contribution Level: \$10,000+***

United Way's Tocqueville Society was named as a tribute to Alexis de Tocqueville, a 19th century French diplomat who admired and wrote about the unique spirit of volunteerism he observed in America. The Tocqueville Society honors and recognizes the philanthropic leadership of individuals and couples who have a deep commitment to this region. They believe in our mission to strengthen our community through support of our children, education, and financial stability.

Thank you to these individuals who have made such a commitment to our community!

Anonymous (4) (1\*)  
Bill & Kathy Baldasaro  
Gehlbach Family Fund  
Kathleen & Mark Gross  
Peter & Bridget Hansel  
Kris & Dick Hill  
John & Jean Hoffman  
Ken & Carol S. Jue  
Bob & Margie Palmer  
Jim & Judy Putnam



# LEADERSHIP DONORS

## Rappellmasters

**Contribution Level: \$5,000–\$9,999**

Anonymous (2)  
Joan Ames  
D.E. Ash  
Stephanie Baute  
Ms. Eleanor Briggs  
Sue Doyle  
Mr. & Mrs. Hugh Eaton, III  
Thomas & Anne Havill  
Risa & Douglas Keene  
Peter & Barbara Jo Kingsley  
The Kriebel Family  
Kurtz Family Foundation  
Charles Montgomery  
Thomas & Barbara Putnam  
Susan Roston

## Great Descenders

**Contribution Level: \$2,000–\$4,999**

Anonymous (8)  
Mark & Patricia Allen  
Jill Batty & Daryl Stutes  
David & Patricia Blake  
Kürt Blomquist  
Don & Jill Brehm  
Edward & Kathleen Kennedy Burke  
Scott & Christine Clarke  
Margot Close  
Paul & Dawn Comptois  
Christine & Scott Curtis  
Clark & Joanne Dexter  
Michael Dionne  
Dick & Pat Dugger  
Dr. Robert Guardiano  
& Dr. Sherry Guardiano  
Cynthia & Matthew Guiltinan

John & Nancy Hann  
Jennifer M Hanrahan  
Charles H. Henry, DDS  
Lynda & John Hunt  
Sandy Hunt & Kerry Ulrich  
Carl & Ruth Jacobs  
Carroll Johnson  
Jennifer & Gerard Kiernan  
Michael & Susan Kowalczyk  
Liz LaRose  
Pamela & Peter Lynch  
Tom & Heather Minkler  
Marcus Owens  
Reinette & Brian Reilly  
Michael Remy  
Michelle A. Urban & George Ruppel  
Gregory & Patricia Seymour  
David & Jane Stabler  
Val & Jon Starbuck  
Craig Stockwell & Sarah Mustin  
Roger & Ann Sweet  
Gregg & Julie Tewksbury  
Benjamin J. Wheeler  
Patricia B. Wright  
Joseph H. & Lorraine P. Youngs

## Trail Blazers

**Contribution Level: \$1,500–\$1,999**

Anonymous (10)  
Douglas A. Adolphson  
Mike & Betty Christiansen  
Terry Contas  
Mark E. Criswell  
Katie Gardella & Peter Straus  
Charles & SallyAnne Goodale  
Francoise Gooding  
Carl & Karin Gravina

Parker & Sally Hansel  
Patty & Wayne Hatch  
David & Lori Jankowski  
Michael & Tricia Kapiloff  
Walter & Barbara Lacey  
Jane & Steven Larmon  
Nora G. Larsen  
David L. Letourneau  
Delyth Marshall  
Jeffrey & Susan Payton  
Judy & Bob Perry  
Les & Jane Pitts  
James A. & Ann S. Robinson  
Bill Whyte & Katie Schwerin  
Carol Spindler (\*)  
Alan & Melissa Stroshine  
Tony & Barbara Tremblay

## Cliff Hangers

**Contribution Level: \$1,000–\$1,499**

Anonymous (14)  
Ms. Maureen J. Ahern  
Jim Anderson & Bobbie Ewels  
Joanne & David Angell  
Debbie Austin-Brown (\*)  
Dee & Paul Belanger  
Frank Bequaert  
Patrick D. Bischof  
Todd & Deb Bissell  
Mark Bodin  
Drew Boudrieau  
Sam & Lucy Bradley  
Ted & Wanda Chabott  
Sue Chollet  
Eloise Clark & John Treat  
Lisa E. Clouet  
Christopher Coates  
Andrew Crawford  
Angela Criswell  
Candi Dionne  
Dr. Robert & Alfrieda Englund  
John & Doris Ernst  
Alona Florenz  
Mark Fraser  
Meg Freeman  
Mark Fryberger  
James R. Gardner  
Michael & Betsy Gordon  
Bryan T. Granger  
Hal Grant  
Catherine A. Gray  
Sam Halfspring  
Bob & Tori Haring- Smith (\*)  
Wayne & Peg Hartz

**FUNDED  
PARTNER  
SUCCESS**

The COVID-19 pandemic created a world of uncertainty for all of us. We are so proud of how our community responded. Throughout this report, we have highlighted some of the enormous accomplishments of our funded partner agencies in 2021.

## Cheshire County Emergency Housing Collaborative

- Collectively provided 21,967 bed nights to 371 people facing a housing crisis
- 52% of clients engaged in a housing focused case plan
- Conducted COVID testing at shelter sites

Key: (D)-Deceased during the Campaign Year; (\*)-First time Donor

Patricia Haversat (\*)  
 Nancy Hayden  
 Kerry & Marika Henegan  
 Daniel K. Irvine  
 Ockle Johnson & Chris Hrynowski  
 Patrick V. Joyce  
 Marcia & James Kania  
 Gregory & Lisa Kasprzak  
 John W. Kerwin (\*)  
 Charles & Marcia H. Krause  
 Marcia R. Legru  
 Sudhakar Lingineni  
 Carolyn A. Loos  
 Amy Matthews  
 Donald M. Mazanowski  
 Dawn Michelizzi  
 Gloria Morison  
 Anne & Bill Moyle  
 Alexander Much  
 Linda Cates & Thomas Murray  
 Bruce Myrick  
 Chris Nailon  
 Susan & Jeffrey Newcomer  
 Dr. Dale Pollack & Mr. Jim Janetos  
 G. Forrest Quimby & Julia Sirois  
 Michael J. Rafferty & Anni Shamim  
 Mark & Myra Rebillard  
 Christopher Rennix  
 Cathy Conkling & Richard Meyer  
 Bob & Cheryl Rooney  
 Kellie J. Royce  
 The Sarson Family  
 Emily Schwerin-Whyte  
 & Michael Becker-Whyte  
 John & Lisa Seelen  
 Fred Shaw  
 Ann Shedd & Mark Meess  
 Ellen L. Simons  
 Debra N. Stallings  
 Michael & Patricia Stoudt  
 Surry Mountain Fund - NHCF  
 Cameron M. Tease & Dixie Gurién  
 Kimball Temple  
 John L. Thornton  
 Leonard & Phyllis Tichy  
 Ed Tomey & Maich Gardner  
 John N. Walter, Jr.  
 & Sandra Van de Kauter  
 Sarah S. Webb  
 Ronald Whippie  
 Jeanne L. Williams  
 Kathy Williams  
 James Wimer (\*)

### Leap Leaders

**Contribution Level: \$750–\$999**

Chuck & Liz Anderson  
 Stacy Belanger  
 Joseph Callahan  
 Toni Class  
 Elizabeth Helen Cleary-Clark  
 Robert Comalli  
 Terrence Connors  
 Elizabeth Coppola  
 Elizabeth Dragon  
 Andrew Dubois  
 Jim & Sue Ells  
 Pamela Erdmann  
 Paul F. Fagley  
 Elizabeth & Bruce Fox  
 Laura Gringras & Dave Fish  
 Pushkar Goyal  
 Mary Granger  
 Scott & Andrea Greene  
 Dr. & Mrs. Stephen Hoffman  
 Peter & Cornelia Jenness  
 Alex & Sarah Kapiloff  
 Dylan Lane  
 Jane Lescynski  
 Donald & Jessica Lussier  
 Gregory & Susan McConahey  
 Tom & Karen McDonough  
 Allen & Ellen Mendelson  
 Mary Day Mordecai & Ned Hulbert  
 Theodore H. & Ruth D. Parent  
 Veronica Payne (\*)  
 Dominic Perkins & Deirdre Chretien  
 Ian R. Ramey  
 Martin Schiesel  
 Gary & Jane Shapiro  
 Dr. Todd Silberstein  
 Mr. Justin Therieau (\*)  
 Penelope R. Vaine  
 Stephanie Wright

### Venturers

**Contribution Level: \$500–\$749**

Anonymous (43) (2\*)  
 Larry Ahern  
 Ms. Cecily Bastedo  
 William & Anne Batesole  
 Cheryl Belair & Stephen Bragdon  
 Frances Benton & David Nallett  
 Lynn & Ken Bergman  
 Lisa A. Bergmann  
 Andrew S. Bohannon  
 & Misty Martinez-Bohannon  
 Craig M. Bourassa  
 Laura L. Brow  
 Peggy Brown & Scott McGovern  
 Ty C. Brown  
 Larry & Suzanne Butcher  
 Steven Cail  
 Annie Card  
 Kathleene & Andy Card  
 Don & Heidi Carlisle  
 Don Caruso & Nancy Johnson  
 Louis & Suzanne Castriotta  
 Jerry Chamberlin  
 Walt Chapman  
 Richard W. Clark  
 Anissa Clement  
 Mr. Daniel Cohen  
 Nancy B. Cone  
 Faith M. Conley  
 Natalie Conley  
 Joni M. Cormier  
 Shawn Crowell (\*)  
 Scott & Kim Cunningham  
 Beth L. Daniels  
 Emily DeMaria  
 Bill & Kris Dow  
 Jane G. Dreissig  
 Bill & Lisa Edwards  
 John & Joely Fanning

## FUNDED PARTNER SUCCESS

The COVID-19 pandemic created a world of uncertainty for all of us. We are so proud of how our community responded. Throughout this report, we have highlighted some of the enormous accomplishments of our funded partner agencies in 2021.

### Hillsboro Child Development Program

- Program provides children 2.9 – 5 years old with high quality programming in preparation for attending public school
- 38 children enrolled in childcare services
- 100% of children enrolled are working toward expected areas of development

Key: (D)-Deceased during the Campaign Year; (\*)-First time Donor

Barry & Carol Faulkner  
 Laurie Favreau  
 Mark D. Fernald  
 Vicki & Jim Flanders  
 Margaret E. Foxweldon  
 Susan C. Fratus  
 Robert Gogolen & Beth Caldwell  
 Michael Gokey  
 Tyler Goodhue  
 Mahesh Goswami  
 Dayna M. Guldhauge  
 George Scott & Charlotte Guyer  
 Daniel J. Haight  
 Nancy & Jim Hall  
 Mr. Henry H. Hammond (\*)  
 Nancy & Roger Hansen  
 Susan M. Hansmeier  
 John & Jeanne Harper  
 Sarah A. Harpster  
 Michael Haynes  
 Ryan N. Hayward  
 Anna Carmela Hinderaker  
 Todd Horner (\*)  
 Nathalie Houder  
 Sharman Howe & Eduardo Moura  
 Mr. & Mrs. Dennis M. Huston  
 Dr. & Mrs. George A. Idelkope  
 Thomas & Evelyn Izbicki  
 Brent D. Johnson  
 Jay & Cheryl Kahn  
 Robert Kenney  
 Michael Kiluk (\*)  
 Ms. Joslin Kimball-Frank  
 Bryanne E. Kingsbury  
 Gregory Kleiner  
 David & Sandra Kochman  
 Michael Kolodziej (\*)  
 Wayne Lacoste  
 Ms. Briana Leighton (\*)  
 Joanne H. LeRoy  
 Scott A. Leslie  
 William K. Lindsey

Vicki & Joe Loughery  
 Michael & Sarah MacDonald  
 Matthew J. Mackey  
 Susie & Jim Margraf  
 Marianne Marsh, MD  
 Craig & Sylvia McBeth  
 Jason McLean  
 Sue McMillan  
 Kathryn & Dennis Mead  
 The Meehan Family  
 Jennie Meister  
 Andrew & Dawn Merrill  
 David & Doreece Miller  
 Todd H. Miller  
 William R. Mitchell  
 David & Donna Morse  
 James Mountford, III  
 Beth Muzzey  
 Dave & Margaret Nelson  
 Tom & Carol Newcombe  
 Lisa & Mark Nugent  
 Edward C. O'Brien  
 Amanda L. Owens  
 Anne-Marie Pasquarelli  
 Mrs. Walter Peterson (D)  
 Rickey Phippard  
 Sandie Phipps  
 Suelaine Poling & Bruce Myrick  
 Stephen R. Power  
 Julie Pratt  
 Judith Putzel  
 Peter & Suzanne Read  
 Heidi F. Rinehart, MD  
 Jaime & Julie Rios  
 Jennifer F. Risley  
 Joel Robinson  
 Denise Roderick  
 Mr. Jeffrey Saunders, Jr. (\*)  
 Kelly Scargill  
 Richard D. Scheinblum  
 Thomas A Shurman  
 Sue Silver

Jay Smeltz & Julie Dickson  
 Cory J. Smith  
 Zack, Bri, Aiden, Silas,  
 Elijah Smith (\*)  
 Jennifer Springer  
 Billy & Kate Stahl  
 Joseph Staples & Suzanne Morin  
 Jon & Kathy Thatcher  
 David & Lisa Therrien  
 Rob & Lianne Therrien  
 Linda Thomas  
 Renee Towle  
 Melinda D. Treadwell  
 Drs. Andrew & Suzanne  
 Nabi-Tremblay  
 Paul Tuller  
 Georgette Vachon  
 Nancy & Paul Vincent  
 Leah Walsh  
 Todd Watkins & Janet Cleary  
 Bill Whyte & Katie Schwerin  
 Bruce Will (\*)  
 Dr. Donald V. Wilson  
 Ken Woods (\*)  
 Philp Wyzik  
 Adam C. Zinn

### Leadership Givers Who Prefer Not to be Recognized by Giving Level

Michael & Kathryn Blair  
 Ben & Kaaron Brown  
 Ken Stewart & Mary Lou Caffrey  
 Joe Marks & Maggie Cahoon  
 Rick & Betsey Church  
 Chris & Nancy Cogliandro  
 Caroline & Tom Ewing  
 Stan & Cheri Fry  
 Joseph & Tina Greathouse  
 Vaughan & Martha Hennum  
 Megan Burke Kidder  
 Kathy Knutsen  
 Linda & Tad Lacey  
 Maryann & Robert Mucha  
 Joseph & Rosaleen Parisi  
 Chuck Prigge  
 Daniel & Louise L. Rath  
 Bea & Bud Record  
 John Renaud  
 Wallace Reney  
 Keith & Crystal Rokes  
 Sharon & Jim Rousmaniere  
 Lynn & Arthur Simington  
 Nat & Sharon Stout  
 Terrence L. Williams

## FUNDED PARTNER SUCCESS

The COVID-19 pandemic created a world of uncertainty for all of us. We are so proud of how our community responded. Throughout this report, we have highlighted some of the enormous accomplishments of our funded partner agencies in 2021.

### Keene Day Care Center

- 105 children served
- 100% of families report that program practices support continuity of care for their children
- Low turnover rate of children compared to past years



## Legacy Society

Thank you to those who have established a planned gift for Monadnock United Way through their will or estate.

Anonymous  
Katie Gardella & Peter Straus  
Laura Gingras & Dave Fish  
John & Jean Hoffman  
Carol & Ken Jue  
Doug Maynard  
Sylvia D. McClary (D)  
Allen & Ellen Mendelson  
SB Legacy

## Workplace Campaigns

*(allowing public recognition)*

Our Workplace Campaigns continue to be a valued tradition in our fight for children, education, financial stability in our region. The continued participation of local and global businesses in our campaign is a hallmark of our success. Thank you to all of the employees who give so selflessly through their workplace campaigns and to the businesses who give so generously.

Anonymous (21)  
Autex Inc.  
C&S Wholesale Grocers, Inc  
Carlisle Wide Plank Floors  
Cedarcrest Center for Children with Disabilities  
CHESCO  
Cheshire Builders  
Cheshire County Employees  
Cheshire Medical Center & Dartmouth Hitchcock Keene  
City of Keene  
Clark-Mortenson Agency, Inc.  
Connection  
Corning Specialty  
Douglas Co.  
Electronic Imaging Materials, Inc.  
EMF Inc.  
Emile Legere Management  
ES3, LLC  
Eversource  
F.H. Hamblet, LLC  
Fenton Family Dealerships  
Filtrine Manufacturing Company  
Gryczka & Associates  
Hamshaw Lumber, Inc.  
Harrisville Designs, Inc.  
HCS- Home Health Care Hospice & Community Services

Hundred Nights, Inc.  
Kapiloff Insurance Agency, Inc.  
KCS Architects  
Keating, Inc. (DBA Keating Plumbing & Heating)  
Keene Day Care Center, Inc.  
Keene State College  
Markem-Imaje  
Monadnock Community Hospital  
Monadnock Family Services  
Monadnock Food Co-op  
Monadnock United Way  
Monadnock Worksource  
SAU 29 Administration  
SAU 29 Chesterfield School  
SAU 29 Franklin School  
SAU 29 Fuller School  
SAU 29 Jonathan Daniels School  
SAU 29 Keene High School  
SAU 29 Keene Middle School  
SAU 29 Marlborough School  
SAU 29 Marlow School  
SAU 29 Symonds School  
SAU 29 Wells Memorial School  
SAU 29 Westmoreland School  
SAU 29 Wheelock School  
SAU 34 - Hillsboro Administration  
SAU 92 Administration - Hinsdale School District



**Mike Jablonski, President of Whitney Brothers**, has lived in Keene for most of his life. As he says, "I moved to Keene before graduating from Keene High School and Keene State College, and have lived in Keene ever since. I wouldn't want to live anywhere else." He is committed to this community and to MUW. And it shows. He has been giving to MUW for 30 years, even before he started working at Whitney Brothers. He is particularly interested in MUW's children's focus area. "Since Whitney Brothers manufactures children's furniture, we strongly support the programs that benefit local kids. Specifically, I find the

work that Rise for baby and family (a member of the MUW supported collaborative Monadnock Alliance for Families) provides to be extremely valuable and very touching."

Whitney Brothers has been running a workplace campaign for as long as Mike has been working there.

**"I take a lot of pride in seeing how generous my coworkers are in contributing to MUW. Regardless of income level or personal circumstances, Whitney Brothers employees are extremely charitable."**



Asked why he has supported MUW for all these years he said, "MUW funds many valuable programs and now with the current demand for social services due to COVID, they are even more important."

SAU 93 Administration -  
 Monadnock Regional  
 SAU 93 Cutler Elementary School  
 SAU 93 George Emerson School  
 SAU 93 Mt Caesar School  
 SAU 94 Winchester School  
 District  
 Savings Bank of Walpole  
 Southwestern Community  
 Services, Inc.  
 Symbotic  
 The Community Kitchen, Inc.  
 The Insurance Source  
 The Keene Sentinel  
 The Main Street America Group -  
 NGM  
 The Melanson Company, Inc.  
 The Timken Company  
 Theodore H Parent, Attorney, PC  
 office staff  
 True North Networks  
 W. S. Badger Company, Inc.  
 Whitney Brothers  
 Winchester Learning Center  
 Yankee Publishing, Inc.

**Corporate and Foundation  
 Supporters (\$500+ Outside  
 of Workplace Campaign Allowing  
 Public Recognition)**

Local corporate and foundation support plays a critical role in maintaining the Monadnock region's local economies. By giving back, they also have the power to enable long lasting change in every community. These businesses and foundations have our sincerest thanks for their support this year.

21 Bar & Grill  
 AAA Northern New England  
 Keene Housing / Kid's  
 Collaborative Locals  
 NHSECC-State Employee  
 Campaign  
 Ames Performance Engineering  
 ABTech  
 Ames Automotive Enterprises  
 Arthur Getz Trust, Citizens Bank,  
 N.A., Trustee (\*)  
 Hogancamp PC  
 Janos Technology, LLC  
 Johnson & Johnson  
 Kurtz Family Foundation  
 Sylvia D. McClary Family  
 Foundation/RJ Charitable Board  
 of Trustees

Monadnock Ford  
 Oleonda Jameson Trust  
 NBT Bank  
 Parrish Shoes  
 Prime Roast Coffee Company  
 Servpro of Keene  
 Surry Mountain Fund - NHCF  
 Sylvia D. McClary Family  
 Foundation/RJ Charitable Board  
 of Trustees  
 Walpole Veterinary Hospital  
 Waterhouse Restaurant & Bar



**2020 Small Business  
 365 Circle Members**

Small businesses contribute significantly to the local economy: providing local jobs and creating strong connections in our community. In turn, a strong, healthy community is good for business. By contributing \$365 to the MUW annual campaign, these businesses are part of a unique partnership directly supporting MUW and our community.

Greenwald Realty Associates  
 Thai Garden

**In-Kind Support**

Thank you to these In-Kind Donors to the 2021 Stronger Together!

Communication Mark, Inc.  
 Deep Roots Massage &  
 Bodywork  
 Michelle DellaVita  
 Gryczka & Associates  
 Monadnock Broadcasting Group  
 Oster & Wheeler PC  
 Think Design  
 True North Networks

**Event Sponsors**

Anonymous  
 TD Bank  
 Douglas Co.  
 Hamblet Electric Charitable  
 Foundation  
 Mascoma Savings Bank  
 Savings Bank of Walpole  
 The Keene Sentinel  
 True North Networks

**Media Sponsors**

The Keene Sentinel  
 Monadnock Ledger-Transcript  
 Monadnock Radio Group  
 101.9 & 100.7 The Peak

FUNDED  
 PARTNER  
 SUCCESS

The COVID-19 pandemic created a world of uncertainty for all of us. We are so proud of how our community responded. Throughout this report, we have highlighted some of the enormous accomplishments of our funded partner agencies in 2021.

**Monadnock Community Early Learning Center**

- 80 children served
- 63 children received childcare assistance so caregivers could go back to work
- MUW funds help MCELC families who are unable to pay market rates for childcare and do not qualify for state tuition assistance



# CORPORATE SPONSORS

## Community Champions



## Community Boosters



## Media Sponsors



## Community Partnership Members

Scott Hussey Photography

The Local Crowd – Monadnock

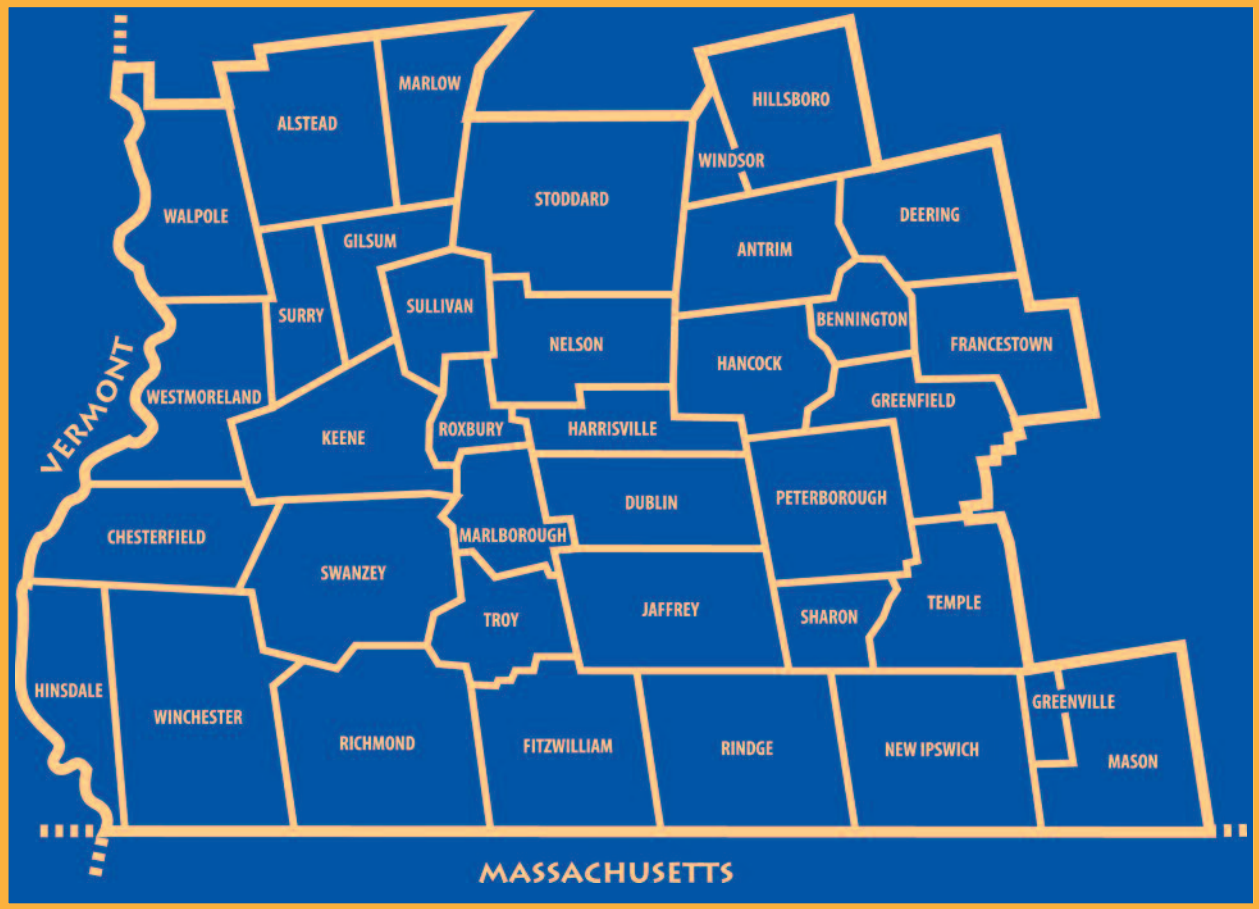
# FINANCIAL REPORT

## MONADNOCK UNITED WAY, INC. STATEMENT OF FINANCIAL POSITION DECEMBER 31, 2021 (WITH COMPARATIVE TOTALS AS OF DECEMBER 31, 2020)

<b>ASSETS</b>	<b>2021</b>	<b>2020</b>
<b>Current Assets</b>		
Cash and cash equivalents	\$2,079,073	\$1,773,500
Accounts receivable	—	500
Grants receivable	549,967	17,983
Pledges receivable, less allowance for uncollectible pledges of \$75,000 as of December 31, 2020 and 2020	590,320	666,463
Other current assets	4,200	3,859
Total current assets	<u>3,223,560</u>	<u>2,462,305</u>
<b>Property, Plant and Equipment, at cost</b>		
Building and improvements	107,697	102,747
Office furniture and equipment	92,338	82,408
Land	4,430	4,430
	<u>204,465</u>	<u>189,585</u>
Less - Accumulated depreciation	182,465	179,238
Net property, plant and equipment	<u>22,000</u>	<u>10,347</u>
<b>Other Assets</b>		
Website development	7,330	7,330
Beneficial interest in foundation assets	358,307	311,973
Total other assets	<u>365,637</u>	<u>319,303</u>
Total assets	<u>\$3,611,197</u>	<u>\$2,791,955</u>
<b>LIABILITIES AND NET ASSETS</b>		
<b>Current Liabilities</b>		
Designations payable	\$ 51,552	\$ 44,493
Due to sub-grantees	—	110,167
Accounts payable and accrued expenses	95,062	67,652
Total current liabilities	<u>146,614</u>	<u>222,312</u>
Total liabilities	<u>146,614</u>	<u>222,312</u>
<b>Net Assets</b>		
Without donor restriction		
Board designated	281,999	281,999
Undesignated	822,269	564,840
	<u>1,104,268</u>	<u>846,839</u>
With donor restriction	2,360,315	1,722,804
Total net assets	<u>3,464,583</u>	<u>2,569,643</u>
Total liabilities and net assets	<u>\$3,611,197</u>	<u>\$2,791,955</u>



# MUW proudly serves 35 towns in the Monadnock Region



## MUW is proud of its outstanding charity ratings



23 Center Street, Keene, NH 03431  
603.352.4209 info@muw.org



Monadnock United Way

[muw.org](http://muw.org)